

S8081 and S6064 Series Electric Ball Valves

The electric regulating ball valve is specially designed for the flow control requirements of media such as water , steam, and 50% ethylene glycol in the HVAC system.

◆ Features

- Equal percentage flow characteristics
- Three control modes: switch control, floating point control, or continuous adjustment
- DN15~50 design working pressure: 2.0Mpa;
DN65~150 design working pressure: 1.6Mpa
- Maximum working pressure difference: 0.35Mpa



◆ Order Code

S6064 - X XXX X

----- Flow Coefficient
----- Valve Diameter
----- “2” represents 2-way; “3” represents 3-way

S8081 - XX X X / X

----- Supply Voltage: including AC/DC 24V and AC230V or 110V
----- Auxiliary Switches F: 2 SPDT; N: no SPDT
----- Control Type: A(Analogue) Modulating;
D(Digital) on/off
----- Torque: 5Nm, 10Nm, 20Nm, 30Nm, 40Nm
----- S8081

◆ Ball Valve and Actuator Configurations

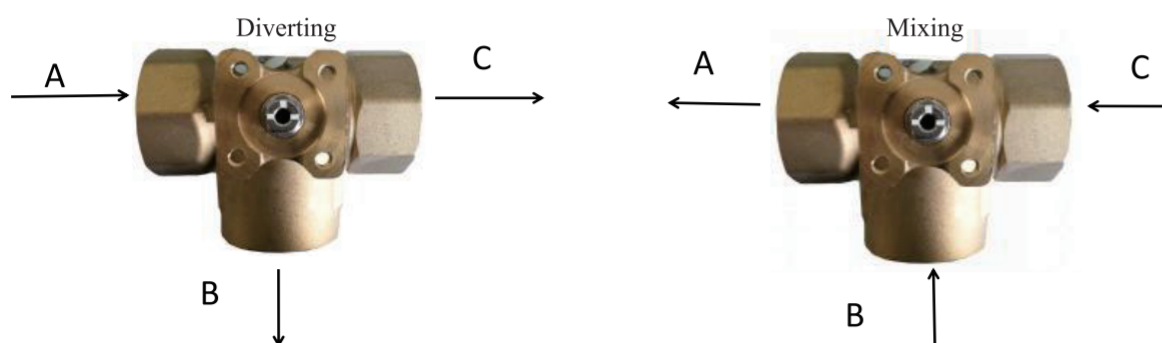
Ball valve Diameters	DN15~DN32	DN40, DN50	DN65, DN80, DN100	DN125	DN150
Actuator and Connector Model	S8081-05	S8081-10	S8081-20	S8081-30	S8081-40
	SLZJ-06	SLZJ-06	JSZJ-08-B	JSZJ-07	JSZJ-01

S8081 and S6064 Series Electric Ball Valves

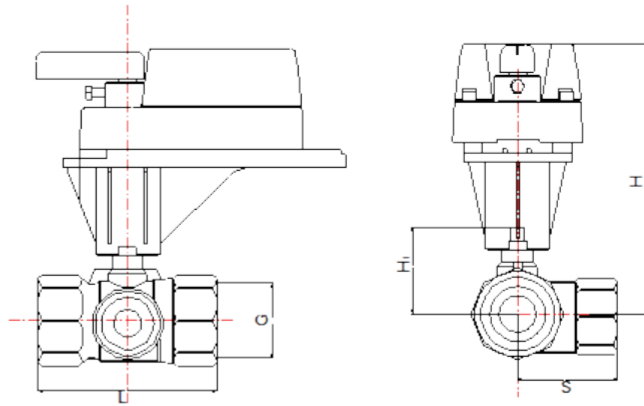
◆ Ball Valve Technical Specifications

Items	DN	(A-B)Way KV(m ³ /h)	Bypass KV(m ³ /h)	Rotation Angle	Pressure Difference	2-Way (Kg)	3-Way (Kg)
S6064-2015A	15	1.3	1.6	0-90°	0.35Mpa	0.2	0.25
S6064-2015B		2.5	2.5				
S6064-2015C		3.6	4.0				
S6064-2015D		4.6	5.0				
S6064-2020A	20	2.3	2.5			0.35	0.4
S6064-2020B		4.5	4.0				
S6064-2020C		6.5	5.0				
S6064-2025A	25	9.5	6.3			0.55	0.7
S6064-2025B		23.5	8.0				
S6064-2032A	32	15	10.0			0.85	1.1
S6064-2032B		36	12.5				
S6064-2040A	40	24	16.0			1.2	1.4
S6064-2040B		36	20.0				
S6064-2050A	50	42	25.0			1.95	2.2
S6064-2050B		60	31.5				
S6064-2065A	65	43	---	4.5	---		
S6064-2080A	80	77	---	6.8	---		
S6064-2100A	100	108	---	8.1	---		
S6064-2125A	125	204	---	12.0	---		
S6064-2150A	150	260	---	18.8	---		

◆ Flow Direction Specification



◆ DN15-DN50 Dimensions unit (mm)

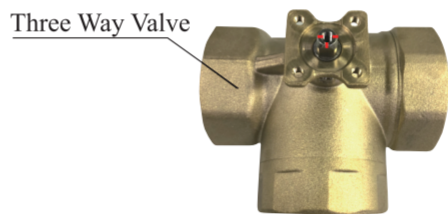


Items	G	H(mm)	H1(mm)	L(mm)	S(mm)
S6064-2015	G1/2	130	37.5	60	---
S6064-2020	G3/4	130	44	73	---
S6064-2025	G1	135	47	89	---
S6064-2032	G1-1/4	140	52.5	102.5	---
S6064-2040	G1-1/2	145	57	113	---
S6064-2050	G2	150	62	127.5	---
S6064-3015	G1/2	130	39	60	30.5
S6064-3020	G3/4	130	44	66	32
S6064-3025	G1	135	47	89	46.5
S6064-3032	G1-1/4	140	52.5	98.5	49
S6064-3040	G1-1/2	145	57	106	52
S6064-3050	G2	150	62	123	69

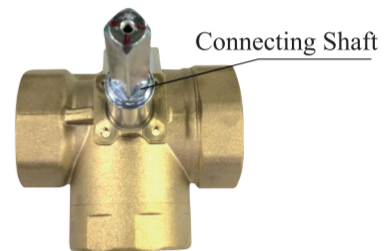
Note: DN15~50 uses BSPP British standard parallel pipe thread connection.

◆ DN15-DN50 Ball Valve Installation Diagrams

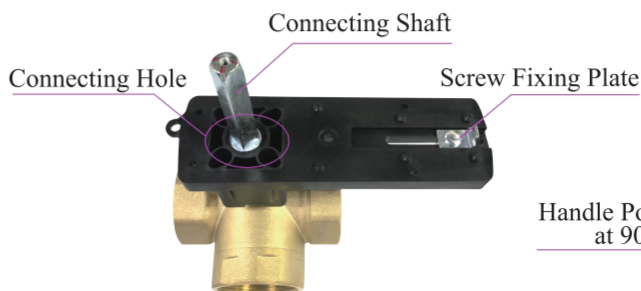
Step 1



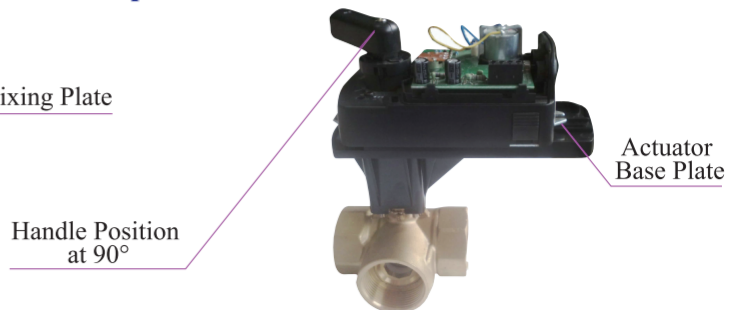
Step 2



Step 3

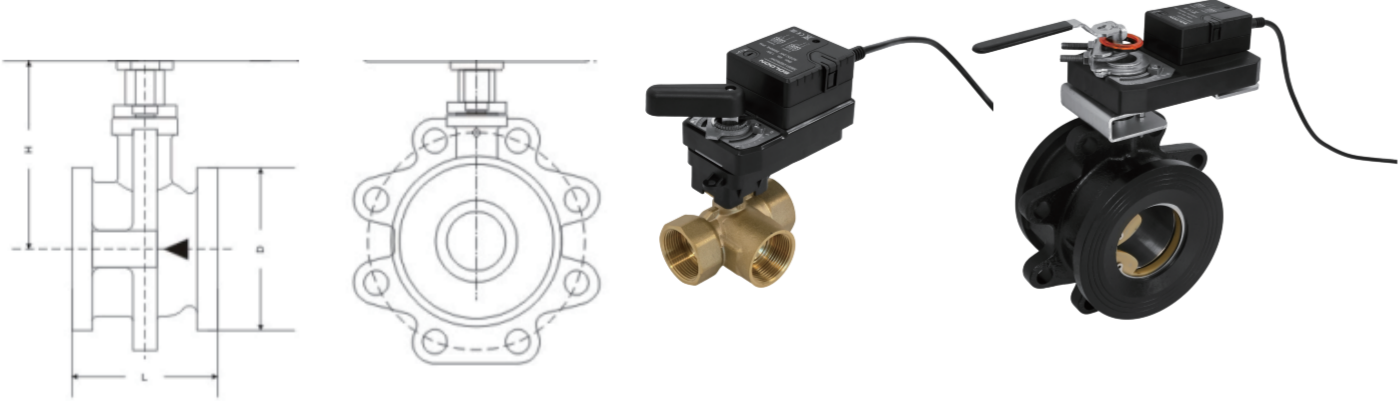


Step 4



S8081 and S6064 Series Electric Ball Valves

◆ DN65-DN150 Dimensions unit (mm)



Items	Pitch Circle	L(mm)	D(mm)	H(mm)	n-d
S6064-2065	145	97	105	136	4-18
S6064-2080	160	108	125	140	8-18
S6064-2100	175	120	145	104	8-18
S6064-2125	200	145	175	115	8-18
S6064-2150	230	165	205	138	8-18

Caution: To avoid injuries whilst the valve is closing, do not put fingers inside when the valve is open.

◆ DN65-DN150 Ball Valve Installation Diagrams

Step 1



Step 2



Step 3



Step 4



1. The installation must be carried out by personnel who have received relevant training or relevant work experience. During the installation process, be careful not to operate with power on, and install the actuator according to the regulations.
2. The device contains electrical and electronic accessories, so it is prohibited to dispose of it as ordinary garbage after the product is scrapped. The disposal method should comply with the regulations and requirements of the local government.